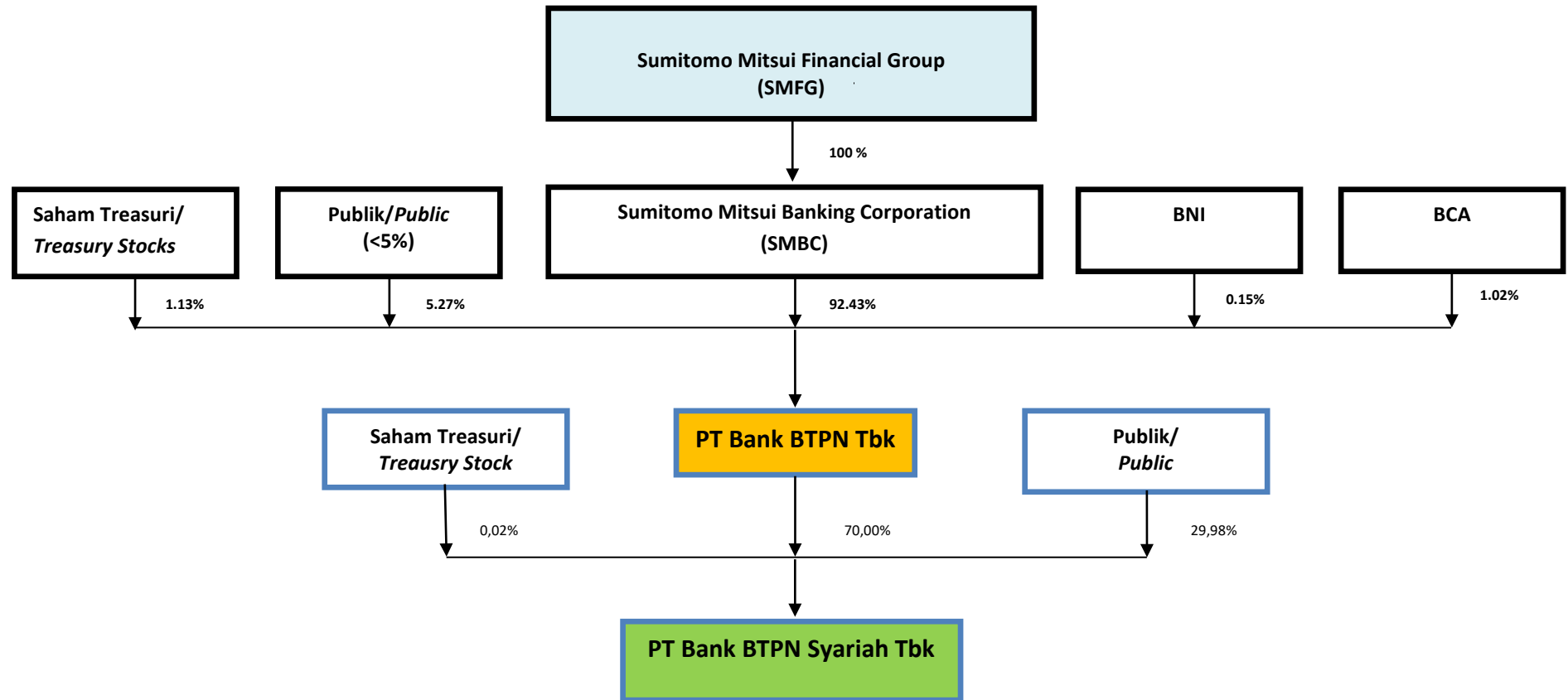


STRUKTUR KEPEMILIKAN (*The Structure of Ownerships*)
PT BANK BTPN SYARIAH TBK Posisi 31 Januari 2022 (*as of 31 January 2022*)



Pemegang Saham Pengendali Terakhir <i>Ultimate Controlling Shareholder</i>	Sumitomo Mitsui Financial Group (melalui Sumitomo Mitsui Banking Corporation/ <i>through Sumitomo Mitsui Banking Corporation</i>)
Pemegang Saham Pengendali <i>Controlling Shareholder</i>	PT Bank BTPN Tbk (70%)
Pemegang Saham bukan PSP melalui pasar modal ($\geq 5\%$) <i>Non-controlling shareholder through capital market ($\geq 5\%$)</i>	Nihil
Pemegang Saham bukan PSP tidak melalui pasar modal ($\geq 5\%$) <i>Non-controlling shareholder not through capital market ($\geq 5\%$)</i>	Nihil