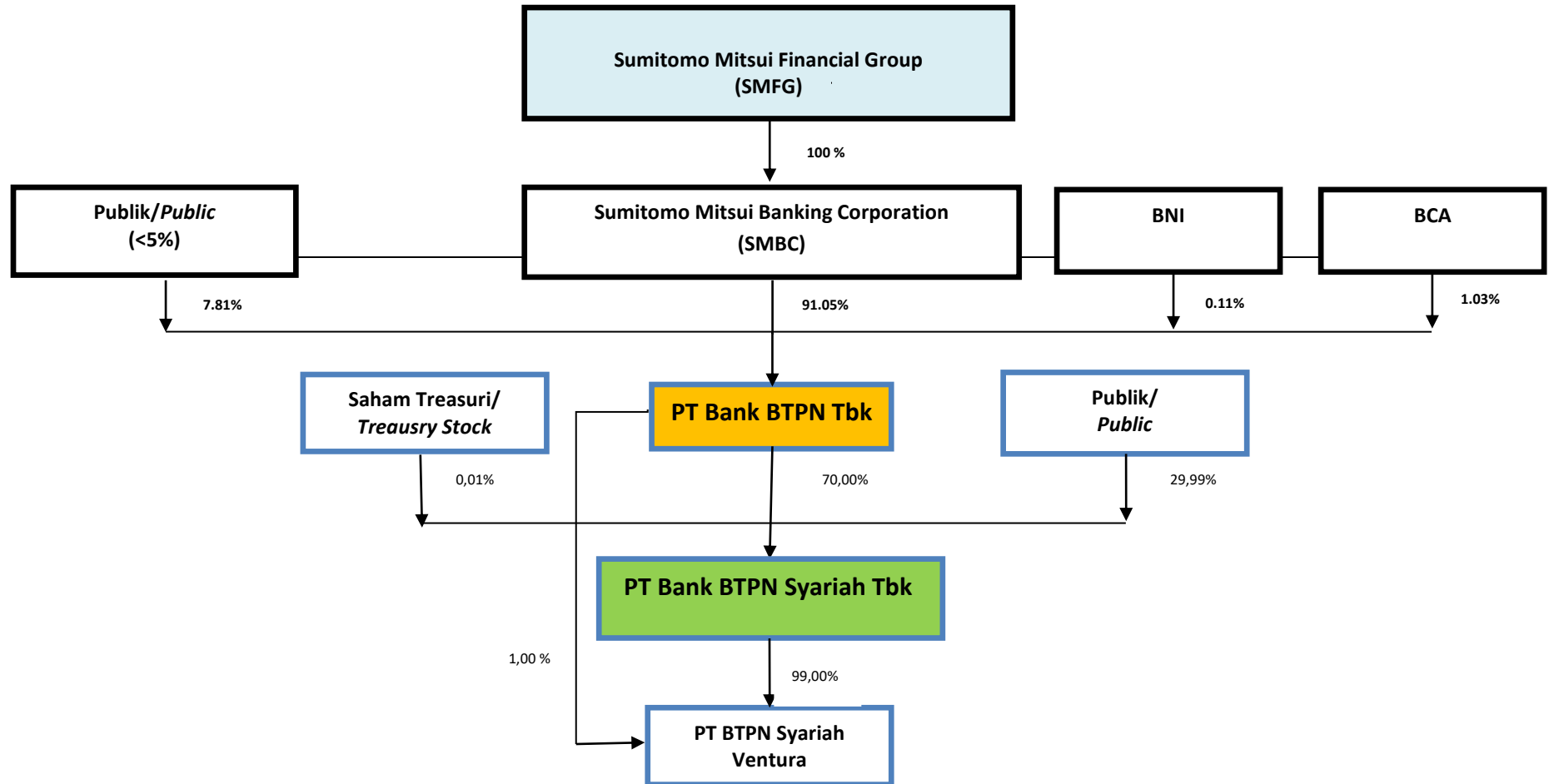


STRUKTUR KEPEMILIKAN (The Structure of Ownerships)
PT BANK BTPN SYARIAH TBK Posisi 31 Maret 2024 (as of March 31, 2024)



Pemegang Saham Pengendali Terakhir <i>Ultimate Controlling Shareholder</i>	Sumitomo Mitsui Financial Group (melalui Sumitomo Mitsui Banking Corporation/ through Sumitomo Mitsui Banking Corporation)
Pemegang Saham Pengendali <i>Controlling Shareholder</i>	PT Bank BTPN Tbk (70%)
Pemegang Saham bukan PSP melalui pasar modal (≥5%) <i>Non-controlling shareholder through capital market (≥ 5%)</i>	Nihil
Pemegang Saham bukan PSP tidak melalui pasar modal (≥5%) <i>Non-controlling shareholder not through capital market (≥5%)</i>	Nihil